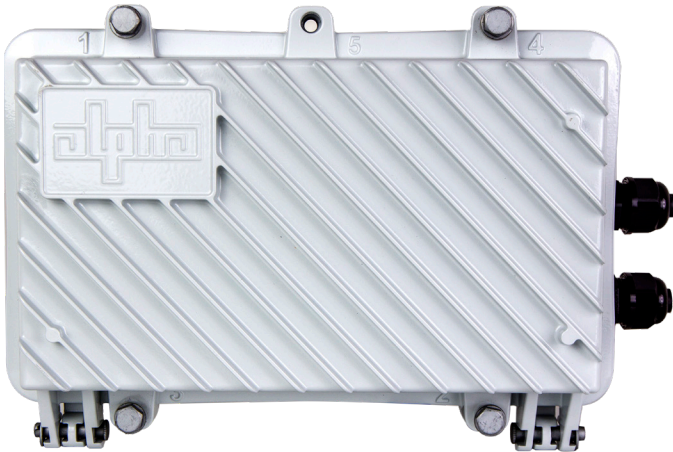


AlphaGateway SMG

HFC-Enabled Power over Ethernet (PoE+) Gateway



Features:

- Create new MSO revenues by leveraging the HFC network
- High bandwidth PoE-powered delivery ideal for security cameras, Wi-Fi, traffic signals, sensors, etc.
- Connection through power passing taps allows mobility to strategically locate devices within proximity of hardline coax
- Dual-PoE ports provide cost-effective backhaul for multiple devices

Deliver uninterrupted power and Gigabit Ethernet services to outdoor devices utilizing the high bandwidth networked power grid inherent to the existing HFC infrastructure.

The SMG family of outdoor HFC powered gateways extract power and RF from HFC hard coax and convert through a hardened DOCSIS modem to deliver power and Ethernet backhaul communication for external network devices via a standard IEEE 802.3 at Power over Ethernet (PoE) connections.

Rugged outdoor hardiness and flexible mounting options allows power and backhaul to be delivered to virtually any location

within the proximity to the HFC hard coax. Adding powered network drops throughout the HFC network enables new revenue opportunities for deployable security surveillance, WiFi, traffic control, digital signage or any other appliance requiring reliable power and high bandwidth backhaul.

Models:	SMG-01PE-21	SMG-01PE-24
Cable Modem		
Compliance:	DOCSIS 3.0	EuroDOCSIS 3.0
Transmit Frequency Range:	5 to 42MHz	5 to 65MHz
Receive Frequency Range:	88 to 1002MHz	108 ~ 1002MHz
Channel Bandwidth:	6MHz	8MHz
Downstream Data Rate:	Up to 300Mbps (8 bonded channels)	Up to 400Mbps (8 bonded channels)
Maximum Operating Level (3 or 4 Channels):	TDMA: QPSK, QAM(8, 16, 32, 64) S-CDMA: QPSK, QAM(8, 16, 32, 64, 128)	TDMA: QPSK, QAM(8, 16, 32, 64) S-CDMA: QPSK, QAM(8, 16, 32, 64, 128)
Upstream Data Rate:	Up to 100Mbps (4 bonded channels)	Up to 100Mbps (4 bonded channels)
Outdoor Hardened:	Yes	
Network Management Protocols:	SNMPv1, V2C, V3, TFTP, Layer 2 VPN (Business Services over DOCSIS (BSoD))	
Input Connector:	RF F-type female	
Input Impedance:	75 Ohm	
Privacy:	BPI+	
Downstream Modulation:	64 or 256 QAM	
Ethernet		
Number of Powered Ethernet Ports:	2	
Connection:	10/100/1000 BASE-T auto sensing/auto-MDIX (8P8C modular jack)	
Distance:	100M	
Bulkhead Interface for Ethernet:	Secure grommet (0.17 to 0.25in outer diameter cabling)	
Power Over Ethernet:	Compliance: IEEE 802.3at PoE Max Power Out: 31.5W per port Max Power at PD (Powered Device): 25W per port Voltage Range Out of Base Unit: 50-57V Voltage Range at PD: 42.5-57V Max Current: 600mA per port	
Remote PoE Port Power Control:	On, off, reset (per port)	
Remote PoE Status:	Link up/down, link speed, power up/down, PoE device class, PoE power consumption	
Remote PoE Device Status:	MAC address, IPv4/IPv6 address	
Environment		
Input Voltage:	44 to 90VAC, 50/60Hz (HFC plant powered)	
Power Consumption:	15W + PoE Loading	
Operating Temperature:	-40 to 60°C (-40 to 140°F)	
Storage Temperature:	-40 to 70°C / (-40 to 158°F)	
Humidity:	5 to 100%, non-condensing	
Regulatory Compliance:	Certification Marks: CSA c/us, CE Environmental: UL50E / NEMA 6; IEC 60529: IP67 Safety: UL/IEC/EN 60950-1: ED2 Surge: SCTE 81 EMC: FCC Class B (FCC CFR 47 Part 15 Class B), ICES-003 RoHS: Directive 2011/65/EU	
Physical		
Mounting Options:	Strand, pole, wall, vault	
Dimensions H x W x L (in/mm):	8.8 x 5.4 x 13.3 / 223 x 137 x 338	
Weight (lb):	11.2	



Worldwide Corporate Offices

North America
Tel: +1 360 647 2360
Fax: +1 360 671 4936

Europe
Tel: +49 9122 79889 0
Fax: +49 9122 79889 21

Latin America
Tel: +561 792 9651
Fax: +561 792 7157

Asia
Tel: +852 2736 8663
Fax: +852 2199 7988

www.alpha.com